

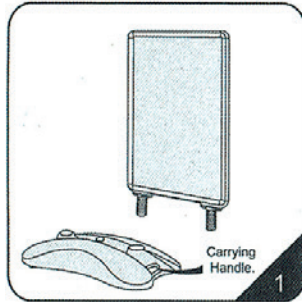


🇬🇧 Pavement board with 32 mm alu snap-frame with rounded corners. Antireflex APET front panels. Springs are treated to prevent corrosion. The foot is made of heavy duty plastic material and can be filled with water or sand to give the sign a really good stability even in rough weather conditions. Please add anti-freeze if below 0° C. The two wheels makes the board easy to move around - grasp the handle and tilt the board. Take care not to move the sign over high steps or kerbs.

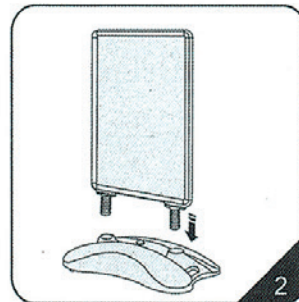
🇩🇪 Strassenständer mit 32 mm Alu-Profil und abgerundeten Ecken. Mit entspiegelten APET Frontplatten. Die Federn sind gegen Rost behandelt. Der Fuss ist aus schlagfestem Kunststoff hergestellt und kann mit Wasser oder Sand gefüllt werden. Bei Kältegrade mit Frostschutzmittel nachfüllen. Die 2 Rollen erleichtern den Transport des Ständers - den Griff nehmen und der Ständer kippen. Achten Sie darauf, nicht über hohe Kanten und Bordsteine zu ziehen.

🇩🇰 32mm alu snap-frames med pæne afrundede hjørner. Antireflex APET frontplader. Fjedere er behandlet mod rust. Foden er lavet af slagfast plast og kan fyldes med vand eller sand for virkelig god stabilitet. I tilfælde af frost, påfyldes frostvæske. De to hjul, gør det nemt at flytte skiltet ved at gribe i håndtaget og vippe det på skrå. Pas på - ikke at køre skiltet over høje trin eller kantsten.

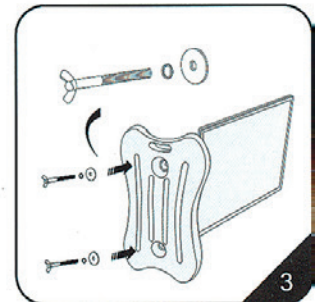
Assembly Instructions



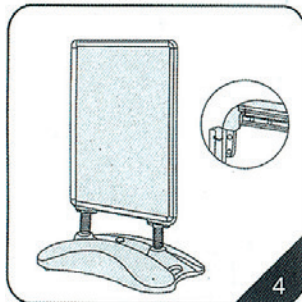
The cartons will contain a water-fill base and a poster frame.



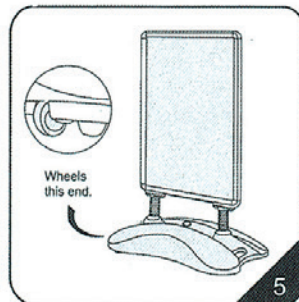
Insert the legs of the poster frame into the holes of the water-fill base.



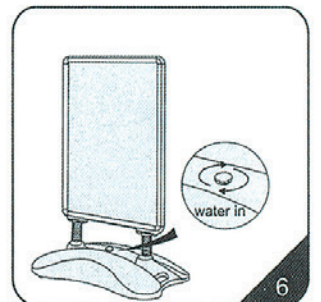
Resting the poster frame on the ground, use the fixings shown to attach the water-fill base to the poster frame.



Use the lever tool to open the poster frame sides.



Place the poster in & then the clear plastic poster cover before closing the poster frame sides. Repeat for the second side. The sign is now ready to be moved.

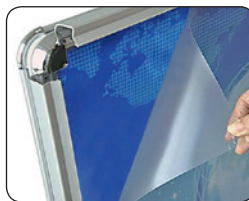


Please fill with water, or use sand in the base.



ART. 12905

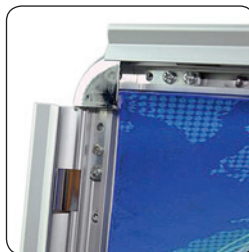
USE A TRANSPORT TOOL FOR MOVING IF THE BOARD IS FILLED WITH WATER ...



BRACKET
50 x 70 CM



BRACKET
A1 AND
70 x 100 CM



WHEELS ON 50 x 70 CM & A1



WHEELS ON 70 x 100 CM



Model	Art.no.	Poster size	Colour	Total W x H x D	Base weight	Package size and weight	Pallet size and quantity
124	6003	50 x 70 cm	Grey	79 x 101 x 51 cm	29 kg /25 litres	60 x 7 x 91 + 52 x 16 x 81 cm 17 kg	80 x 120 x 220 cm 10 pcs.
-	6004	59,4 x 84,1 cm A1	-	79 x 113 x 51 cm	29 kg /25 litres	67 x 7 x 102 + 52 x 16 x 81 cm 15 kg	80 x 120 x 220 cm 8 pcs.
-	6005	70 x 100 cm	-	102 x 134 x 62 cm	57 kg /50 litres	80 x 7 x 124 + 64 x 19 x 104 cm 22,5 kg	80 x 120 x 220 cm 8 pcs.